



Beech Lawns, Torrington Park, London

£340,000

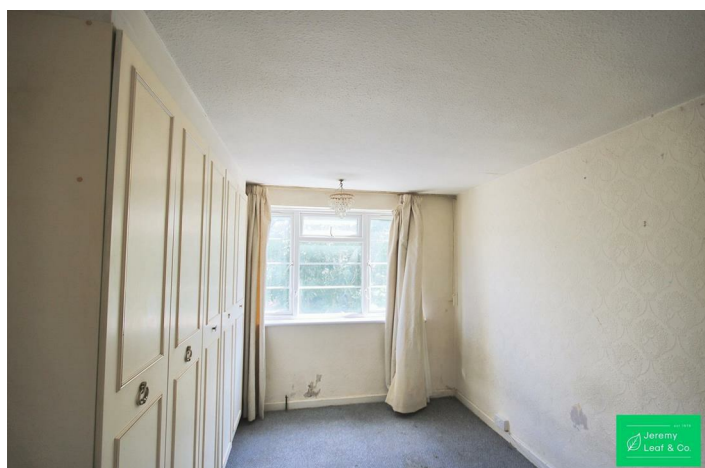
- Bathroom
- Kitchen
- Council Tax Band C
- Unallocated Parking
- Reception
- Balcony
- Service Charge £3,156.50 p.a.
- Two Bedrooms
- Share of Freehold - 990y lease



# 22 Beech Lawns, Torrington Park, London, N12 9PP

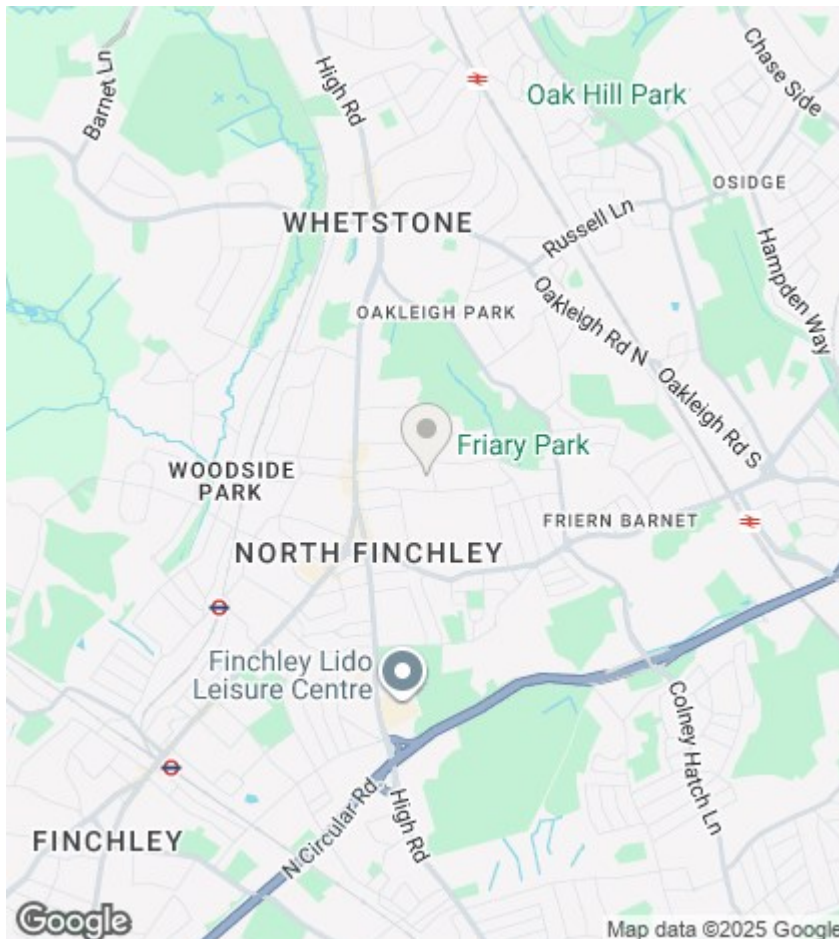
 2  1  1  C

Council Tax Band: C









## Directions

## Viewings

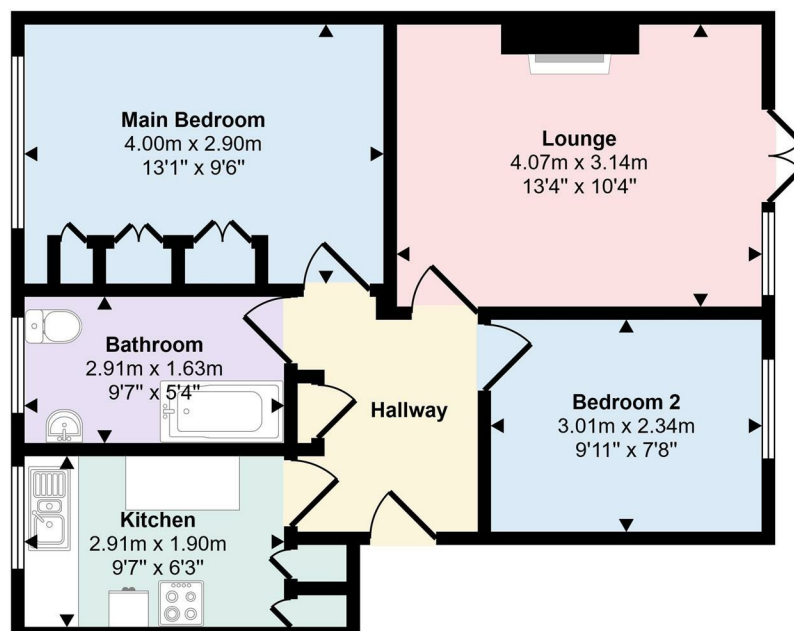
Viewings by arrangement only. Call 020 8446 4295 to make an appointment.

## EPC Rating:

C

Energy Efficiency Rating		
	Current	Potential
Very energy efficient - lower running costs		
(92 plus) <b>A</b>		
(81-91) <b>B</b>		
(69-80) <b>C</b>	72	80
(55-68) <b>D</b>		
(39-54) <b>E</b>		
(21-38) <b>F</b>		
(1-20) <b>G</b>		
Not energy efficient - higher running costs		
England & Wales		EU Directive 2002/91/EC

Approx Gross Internal Area  
50 sq m / 541 sq ft



## Floorplan

This floorplan is only for illustrative purposes and is not to scale. Measurements of rooms, doors, windows, and any items are approximate and no responsibility is taken for any error, omission or mis-statement. Icons of items such as bathroom suites are representations only and do not represent the actual items. Made with: Made Easy 2025